

Monostrand Post-tensioning Jack

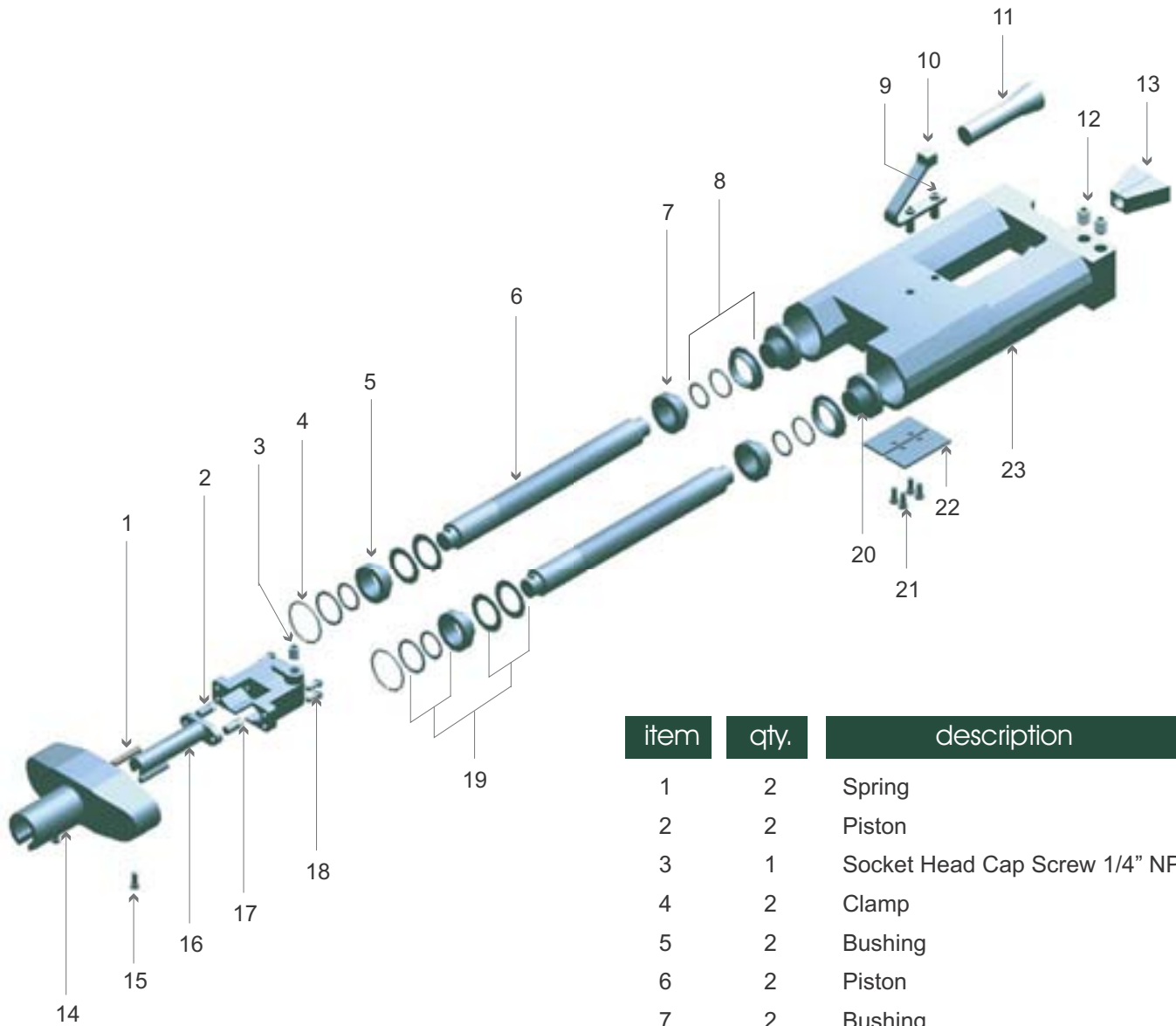


MEXPRESA

specifications	mono 0.5"	mono 0.6"
PRESSURE AREA cm ² (in ²)	40.5 (6.28)	51.3 (7.95)
STROKE cm (in)	22 (8½)	22 (8½)
PRESSURE TO ACHIVE 21,000 kg (47 Kips)	-----	408 BAR (5910 psi)
PRESSURE TO ACHIVE 15,000 kg (33 Kips)	363 BAR (5254 psi)	287 BAR (4150 psi)
WEIGHT kg (lbs)	19.7 (43.3)	29 (63.8)
OVERALL LENGTH cm (in)	46 (18½)	46 (18¼)
WIDTH cm (in)	19 (7½)	21.6 (8½)
THICKNESS cm (in)	6.8 (2 ¹¹ / ₁₆)	7.5 (3)
PISTON cm (in)	5.08 (2)	5.7 (2¼)
HYD. SEATING ATTACHMENT	-----	-----
PISTON AREA cm ² (in ²)	4.35 (0.67)	5.7 (0.89)

NOTE: Jacks 0.6" may be adapted to 0.5" by changing hydraulic head attachment.
Normal length 12.5 cm (5"). Other lengths by special order available.





features of the DEL-Monostrand Jack®

The Main body is machined out of a single block of high performance hardened steel, which guarantees a long life and safety operation.

All conduits for the hydraulic fluid are interior designed. This allows a better and safer operation during tension, retraction and for the power locking circuits as well.

The optimization in the jack, an important advantage for the operator in the field.

All jacks are manufactured with the highest specifications and quality control.

item	qty.	description
1	2	Spring
2	2	Piston
3	1	Socket Head Cap Screw 1/4" NPT
4	2	Clamp
5	2	Bushing
6	2	Piston
7	2	Bushing
8	2	Seals
9	6	Socket Head Cap Screw 1/4" NFx3/4"
10	1	Handle
11	1	Grip
12	2	Socket Head Cap Screw 3/8"
13	1	Gripper
14	1	Head 0.5" or 0.6"
15	2	Socket Head Cap Screw 1/4" NCx1"
16	1	Piston Clamp 0.5" or 0.6"
17	2	O'ring
18	4	Socket Head Cap Screw 5/16" NFx1"
19	2	Seals
20	2	Piston Cap
21	6	Socket Head Cap Screw 1/4" NFx3/4"
22	2	Grippers Cap
23	1	Body

warning

Never increase pressure without tensioning Strand:

- For Jacks 0.5" 363 BAR (5254 psi)
- For Jacks 0.6" 408 BAR (5910 psi)



technical applications

The Monostrand Jack can be used in almost every work related with post-tensioning:

- Slabs on ground
- High rising slabs
- Water tanks and silos
- Tie backs
- Repairing of structures.



quick operating reference

a) On the rear end of the Jack there are two hose connections; one for tension, and one for retraction.

b) Hydraulic oil suggested:

Texaco, Rando oil HD 32

Exxon, Mutuo H32

Quaker, Hidraulic 10

Mobil, Mobile DTE oil light

c) It is important to operate with quick hose connections, directly to the jack.

d) For better wedging, oil with graphite grease on the wall of the gripper groove.



DEL[®]
Construction Systems and Services

MEXPRESA

MEXICANA DE PRESFUERZO S.A. DE C.V.

Av Nativitas 429 • 16090 Xochimilco, D.F. • México
Tel: +(52)(55) 5334 0330 • Fax+(52)(55) 5334 0331
E-mail mexpresa@mexpresa.com